



Pomona College
Sustainability Annual Report

2010-2011

*Sustainability Integration Office
President's Advisory Committee on Sustainability*

Introduction

In May 2011, Pomona’s administration made a landmark decision to approve a Sustainability Action Plan - a ten-year strategic plan outlining priorities, policies, and goals for sustainability. This plan was the result of years of work from students, staff, faculty, and trustees at Pomona, including a series of input-gathering brainstorming sessions, outreach events, and community forums. Together, these stakeholders drafted a vision for sustainability and a road map for achieving these goals.

An integral part of this planning process is measurement, as we assess yearly progress toward these goals and better understand our strengths and weaknesses. This Sustainability Annual Report provides benchmark data on every goal included in the Plan, along with summaries of new and continuing programs related to those goals.

This document provides an extensive overview of Pomona’s sustainability program, from facilities management to student engagement and curriculum development. For the most part, the information in this plan covers the 2010-2011 year (July 1, 2010 to June 30, 2011).



TABLE OF CONTENTS

Administration	3
Education	4
Energy	6
Facilities	9
Food & Agriculture	10
Pollution	11
Purchasing	12
Transportation	13
Waste	14
Water	16
Climate Change.....	17

President’s Advisory Committee
on Sustainability

Prof. Charles Taylor, Chair

Pomona College Sustainability
Integration Office

Bowen Close, Coordinator

sustainability@pomona.edu
www.pomona.edu/sustainability

Research Assistants: Christina Cyr ’13, Emma Foehringer-Merchant ’14, Adam Russell ’12, Meryl Seward ’13

Pomona's administration is an integral part of promoting sustainability efforts on campus. By organizing efforts and providing a framework for sustainable improvement, administrative measures allow development to go forward.

2010-11 Programs

>> **Sustainability Action Plan** This plan, written by the President's Advisory Committee on Sustainability and the Sustainability Integration Office, marks the first time the College administration has outlined a broad strategy for moving forward with campus sustainability efforts. The plan proposes seven goals with quantitative and qualitative 10-year targets in areas including energy, water, waste, and education.

>> **Awards** The Sustainable Endowment Institute's 2011 Green Report Card named Pomona as one of seven to receive a grade of "A" for campus sustainability initiatives. Pomona also came in at #23 in the Sierra Club's Cool Schools ranking. Pomona's SolTrain, a mobile solar energy station, won the Excellence in Innovations for Sustainability from the Assoc. of American College Unions International.

>> **President's Sustainability Fund Program** This year, projects funded with PSF grants (see below) included: post-consumer composting in the dining halls, reusable dining ware and composting materials for events, occupancy sensors for campus vending machines, native landscaping, and more.

>> **STARS submission** Pomona is a charter member of STARS (Sustainability Tracking, Assessment, and Rating System), a nationwide assessment framework for campuses. Pomona submitted their first STARS submission and is one of 24 schools to receive a Gold rating (as of publication).

Ongoing Programs

>> **Collaboration with other institutions** The SIO continued working with a variety of colleagues from other campuses throughout the year, including USC, UCLA, Caltech, Loyola Marymount, and Pepperdine to improve campus sustainability efforts.

>> **Sustainability Integration Office (SIO)** This office, directed by Bowen Close '06, develops, administers, coordinates, and assesses sustainability programs and projects on campus. The office also includes a year-round student staff and manages ReCoop/Clean Sweep and Green Bikes.

>> **President's Advisory Committee on Sustainability (PACS)** This committee produces yearly recommendations for the President and administers the President's Sustainability Fund. In 2010-11, this committee also completed the Sustainability Action Plan and submitted the school's response to STARS (see above).

>> **President's Sustainability Fund (PSF)** Since 2007, this fund has provided a total of \$30,000 distributed in grants to students for on-campus sustainability projects. In the past two years, the PSF has funded composting, water efficiency, renewable energy, waste management, and other projects.

>> **Presidents Climate Commitment** The College has been a signatory of the Presidents Climate Commitment since 2007. This nationwide organization coordinates climate action by colleges and universities. The Climate Commitment entails an annual greenhouse gas inventory and the creation of a plan for reducing emissions.

>> **Statement of Environmental Policy** This policy statement reiterates the College's commitment to environmental sustainability and requires the College to consider sustainability in budgetary, planning, and curricular decisions.

For more information about ongoing curriculum-related efforts, see www.pomona.edu/sustainability ("Initiatives" - "Administration" - "Efforts").

2020 GOALS - How we're doing

⇒ Closer to goal - No change - ⇐ Farther from goal

Data Point	08-09	09-10	10-11	2020 Objective
Existence of consortium sustainability committee	No	No	No	Yes
Sufficient staffing and resources for sustainability programs		Dining position added	⇐ Delay on Energy Manager Position	Yes

Education

Pomona has put increasing emphasis on sustainable education both within the course catalog and outside of the classroom. With ample opportunities for learning and discussion, faculty, students, and staff are able to play a part in the campus discussion of sustainability.

Curricular: 2010-11 Programs

>> **EA190 Senior Seminar** In coordination with the Sustainability Integration Office, the Environmental Analysis Program (see below) debuted a new senior seminar format with students in small groups working on semester-long real-world capstone projects, including issues on- and off-campus.

>> **Outdoor Education Center (OEC)** The OEC (see below) now provides both logistical and technical support for curricular projects that connect students with outdoor environments.

>> **New solar classroom area** The College's new residence halls include a rooftop classroom area for curricular integration of the building's solar systems.

>> **Sustainable OA and OTL** The On The Loose and Orientation Adventure programs have committed to sustainability by emphasizing local trips, buying in bulk, recycling and composting waste from trips, and using produce from the on-campus Organic Farm.

Curricular: Ongoing Programs

>> **Environmental Analysis Program** The Environmental Analysis (EA) Program offers a major, a minor, and a selection of courses. The Program also hosts lectures, films, field trips, and other events.

>> **The Organic Farm** The Pomona College Organic Farm is administered by the EA Program and hosts courses throughout the year. The Farm also offers garden plots to students to grow their own food.

>> **Bernard Field Station** The Claremont University Consortium's 86-acre biological field station is adjacent to the campuses and hosts classroom and research activities.

>> **Summer research projects** In 2010-11, sustainability-related projects were funded by the Summer Undergraduate Research Program, which includes funding for the Schultz Environmental Studies grant, and by the Mellon Environmental Analysis Program.

>> **Study Abroad programs** In 2010-11, the Office of Study Abroad offered 18 approved study abroad programs that offered students the opportunity to study a facet of the environment.



Van Jones speaking on campus in January 2011

Co-curricular: 2010-11 Programs

>> **Outdoor Education Center (OEC)** The College's newly named Outdoor Education Center is one of the nation's premier outdoor education programs and is home to On The Loose and Orientation Adventure. The center emphasizes sustainability and leadership through a outdoor experiences and opportunities for students.

>> **Theme Months** The Sustainability Integration Office and PEAR (Pomona for Environmental Activism and Responsibility) planned four theme months: waste (Sept.), energy (Nov.), environmental justice (Feb.) and food (Apr.). Each month featured activities, programming, awareness campaigns, and more associated with the topic.

>> **Distinguished Lecture: Van Jones** As a part of the Pomona College Distinguished Lecture Series, the College presented the Van Jones lecture "Beyond Green Jobs: The Next American Economy and the Politics of Hope."

>> **Events** 2010-11 included a variety of sustainability-related speakers, including Captain Charles Moore (who discovered the Great Pacific Gyre), Binka Le Breton ("Where the Road Ends: A Home in the Brazilian Rainforest"), Edward Wilson (founder and president of Earthwatch), Carolyn Merchant ("From the Control of Nature to Partnership"), and Mark Winne ("Food, Freedom, and Authority: Who Will Control the Food We Eat?").

>> **Orientation programs** To facilitate sustainability awareness during orientation for new students, the SIO conducted green living training for all Sponsors and Resident Assistants and distributed “The Little Green Book,” a sustainable living guide.

>> **People | Places | Spaces: Second Annual Sustainability Film Festival** This year’s film series focused on environmental justice and included “Green, Green Water,” “Gasland,” “Waste Land,” “Grassroots Rising,” “Bus Riders Union,” “Up the Yangtze,” and “Red Dust.”

Co-curricular Ongoing Programs

>> **Earth Week events** The SIO and student groups once again hosted a variety of Earth Day/Earth Week events, including the 5th Annual Organic Dinner.

>> **eNewsletters** Students, faculty, staff, and the public can sign up to receive a regular e-newsletter about sustainability efforts, programs, and events, and green living tips.

>> **Green Office Program** This program allows offices in the College to gain recognition for adopting sustainable practices in their

purchasing practices, resource use, and waste disposal. As of publication, this program has certified 10 offices on campus.

>> **Educational materials** This year, the SIO continued its use of a variety of educational materials including stickers for light switches and recycling bins, mirror films reminding people to conserve water, and cards with information about the campus’ recycling program which were distributed to staff and faculty.

>> **Sustainable Claremont partnership** The College has continued its partnership with Sustainable Claremont including participating in the City’s annual Earth Day Festival and co-hosting Sustainability Dialogs, a monthly lecture series.

>> **Community partnerships** The Draper Center for Community Partnerships engages in a wide variety of sustainability-related community programs, including a community food security assessment in local communities and a mentorship program at the Farm.

For more information about ongoing curriculum-related efforts, see www.pomona.edu/sustainability (“Initiatives” - “Education” - “Efforts”).



2020 GOALS - How we’re doing

⇒ Closer to goal - No change - ⇐ Farther from goal

Data Point	08-09	09-10	10-11	2020 Objective
% of courses sust.-focused	<i>Data not available</i>	5.5%	⇐ 3%	General increase
% of courses sust.-related	<i>Data not available</i>	12.7%	⇐ 10%	General increase
Campus-related projects*	No change	No change	⇒ Strong increase	General increase
% offices in Green Office	N/A	7.9%	⇒ 12%	30%
% of students taken sustainability pledge**	N/A	N/A	N/A	50%
% of staff/faculty taken sustainability pledge**	N/A	N/A	N/A	30%
% of students signed up for newsletter	<i>Data not available</i>	7.9%	⇒ 12%	30%
% of staff/faculty signed up for newsletter	<i>Data not available</i>	16.9%	⇒ 20%	25%
Sustainability-related campus events*	No change	Increase	Increase	General increase

* General sense of SIO staff and students. ** Pledge is not yet created.

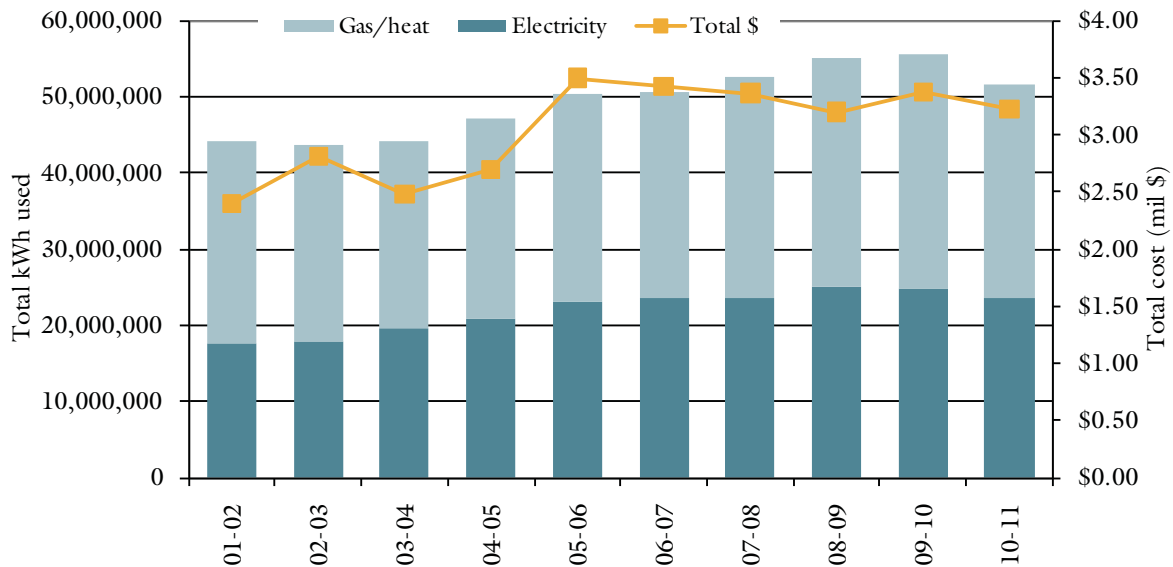
Energy

With a goal of total energy use reduction of 15% by 2020, one of Pomona's main sustainability concerns is energy conservation, efficiency, and the use of renewable energy sources. Reductions in energy use will stem from behavioral changes across campus, infrastructure upgrades and technological additions, and institutional changes in facilities operations and programming. The College is relying on all of these strategies to further reduce electricity and gas use.

Total Energy Use and Sources (in kWh) *denotes estimated

Year	Electricity	Natural Gas	Generators	Solar PV	Solar thermal	Total	Change	kWh/sq-ft	Utility cost (\$m)
01-02	17,657,036	26,610,231	44,689*	0	0	44,311,956	25.0%	34.5	\$2.4
02-03	17,871,247	25,781,129	44,689*	0	0	43,697,065	-1.4%	34.0	\$2.8
03-04	19,587,739	24,693,923	44,689*	1,935*	0	44,328,286	1.4%	34.5	\$2.5
04-05	20,938,425	26,091,504	44,689*	1,935*	0	47,076,553	6.2%	35.5	\$2.7
05-06	23,094,571	27,271,151	44,689*	1,935*	0	50,412,346	7.1%	35.8	\$3.5
06-07	23,375,305	27,255,094	44,689*	115,834	0	50,790,923	0.8%	36.0	\$3.4
07-08	23,483,326	29,101,405	44,689	115,834	0	52,745,254	3.9%	37.4	\$3.4
08-09	24,931,129	30,057,200	54,090	98,211	0	55,140,630	4.6%	39.1	\$3.2
09-10	24,742,545	30,841,201	405,056	109,127	0	56,097,929	1.7%	39.8	\$3.4
10-11	23,451,536	28,050,296	72,775	47,234	6,715*	51,628,556	-8.0%	28.7	\$3.2

Total Energy Use and Cost



Building Performance by the Numbers

- >> The largest total reductions were seen in Seaver South, Seaver North, Lincoln-Edmunds, and Alexander - mainly from reductions in gas use.
- >> The largest total increases were seen in Cowart, Bridges Auditorium, Replica House, and Smiley, from both electricity and gas use.
- >> The largest reductions as a percentage of use were seen in gas use reductions in Seaver House, Carnegie, Alexander, and Hahn.
- >> The largest increases as a percentage of use were seen in Bridges Auditorium, Replica House, Smiley, and the Cottages.

2020 GOALS - How we're doing

⇒ Closer to goal - No change - ⇐ Farther from goal

Data Point	08-09	09-10	10-11	2020 Objective
Total energy use (kWh)	55,140,630	56,097,929	⇒ 51,628,556	45,979,454 kWh (15% reduction over 08-09)
KWh electricity/CDD*	33,778	48,729	⇐ 60,009	No goal set
Therms natural gas/HDD*	810	801	⇒ 703	No goal set
Renewable energy sources	0.18%	0.19%	⇐ 0.10%	4.0%
Energy intensity by district (kWh/square-foot):**				
Academic-Administrative	42.3	42.5	⇒ 35.3	29.6 kWh/sq-ft (30% reduction over 08-09)
Recreation	21.7	21.9	⇐ 22.5	16.3 kWh/sq-ft (25% reduction)
Venues	28.1	23.7	⇐ 27.5	21.1 kWh/sq-ft (25% reduction)
Dining	76.6	75.6	⇒ 71.6	61.3 kWh/sq-ft (20% reduction)
Sciences	58.3	62.9	⇒ 54.8	46.6 kWh/sq-ft (20% reduction)
Residential	21.8	21.6	⇒ 19.9	19.6 kWh/sq-ft (10% reduction)
Houses	8.3	8.1	⇒ 7.9	7.5 kWh/sq-ft (10% reduction)
SGM Library	24.7	19.1	⇒ 14.4	22.3 kWh/sq-ft (10% reduction)
Diesel generator use (gallons of fuel)	1,329	9,952	⇒ 1,775	930.3 gallons (30% reduction over 08-09)
% of buildings individually metered for gas/electricity use	52%	52%	52%	100% (by May 2011)
% of major buildings with metering project complete	0%	0%	0%	100% (by May 2012)
% of all buildings with metering project complete	0%	0%	0%	100% (by May 2015)
% of sq-ft with EnergyStar score >69***	Data not available	Data not available	Data not available	50%
% of major buildings retro-commissioned	0%	0%	0%	100%
% of all buildings with in-depth energy audit	0%	0%	0%	100%

* These measures refer to electricity use per cooling degree day and natural gas use per heating degree day, which describes energy use relative to temperature changes. ** Districts do not include buildings slated for construction/renovation. See Sustainability Action Plan for further description of districts and long-term energy plan. *** EnergyStar analysis not yet completed - the EnergyStar program is currently developing specific metrics for campus facilities.

Energy

2010-11 Programs

>> **POWER DOWN dorm energy challenge** This year, all Pomona residence halls reduced electricity use by 10.5% during the month of November, saving almost \$3,000 and earning double that to spend on a sustainability project. (Students chose efficient shower heads for a variety of residence halls across campus.) Oldenburg won Pomona's dorm competition by reducing their electricity use by almost 23.4%. Pomona's overall 10.5% reduction beat Harvey Mudd's 10.2% reduction and Claremont McKenna's overall increase.



As part of the Green laundry program, drying racks across campus dissuade students from using dryers.

>> **Solar heating** In 2010-11, the College installed five new renewable energy systems – an 82 kW solar PV array and a 2,855 therms/year solar hot water heating system on the North Campus Residence Hall Project, solar heating systems for both Haldeman and Pendleton Pools, and a 75kW solar PV array on the new South Campus Parking Structure.

>> **New electricity meters** Pomona has replaced almost every electricity meter on campus, installing new, network-linked, real-time meters that send data to a central system at 15-minute intervals and provide ongoing feedback about building performance and electricity use. Additional information, including accurate building-level metering and gas and water use, will be added to these meters in the future.

>> **Laundry rack program expansion** Due to demand, the laundry rack checkout program has been expanded to almost 150 racks. Students can check out these racks from the Sustainability Integration Office for free, then use them throughout the year to dry their clothes without using the dryers.

>> **HVAC scheduling changes** Facilities and Campus Services assessed heating and air conditioning schedules for buildings across campus, ensuring buildings were not heated or cooled when unnecessary.

Ongoing Programs

>> **Lighting** Light switch stickers encourage turning off the lights and are distributed across campus. The College has distributed 3,000 stickers to date. New building design emphasizes daylighting to reduce the need for excess light fixtures. The College also conducts bi-monthly checks on outdoor lighting to make sure these lights are off during the day.

>> **Green laundry program** Efforts include EnergyStar laundry machines, drying racks in laundry rooms, Green Laundry guides for students in all laundry rooms, and drying racks for free checkout from the Sustainability Integration Office.

>> **CFL program** Since 2007, The College provides free CFL bulbs for all students, staff, and faculty.

>> **Renewable energy systems** The College has eight solar PV arrays totalling 258.3 kW and three solar hot water heating systems.



Students charge their laptops with SolTrain.

>> **“SolTrain” mobile solar station** This 1kW portable power station is available for events and can power lighting, music, and more.

For more information about ongoing energy-related efforts, see www.pomona.edu/sustainability (“Initiatives” - “Energy” - “Efforts”).

With a list of ongoing construction and renovation projects, Pomona has ample opportunity to implement sustainable developments in facilities. Innovations in energy use, the use of recycled and locally manufactured building materials, the incorporation of new technologies, and other green design elements are always a part of Pomona's design process.

2010-11 Programs

A variety of facilities-related efforts (including efficiency retrofits, operations procedures, etc.) are included throughout this report. This section describes facilities projects only.

>> **Green Building Standards** As part of the College's new Sustainability Action Plan, these standards have been updated and provide guidelines for site management, water efficiency, energy management, materials, and more for all major construction projects. Since 2006, the College has required that all new construction projects be built to a LEED Gold-certified standard, with emphasis on specific LEED credits.

>> **Sontag and Pomona Halls** Construction has concluded on the expected LEED Gold-certified North Campus Residence Halls project, which includes solar arrays, a variety of energy-efficiency technologies, a rooftop garden, and much more.

>> **South Campus Athletic Facility & Parking Structure** This new facility includes a 75 kW solar PV array, native landscaping, and an innovative



Solar panels on the roof of the new residence halls



Native landscaping at the new parking structure

wireless mesh/sensor-linked control system for the lights (the first such installation west of Michigan).

>> **Studio Art facility** Plans for the new facility to be placed between Seaver Theatre and Bridges Auditorium are still in progress. The College anticipates that the new facility will encompass an estimated 36,000 square feet of indoor spaces as well as integrated outdoor spaces. The new space will have a gallery, computer lab, teaching spaces, faculty offices, and student studios. The College is designing the building to meet LEED Gold certification Standard.

>> **Completed Harwood Court renovation** Lighting, plumbing, and other building system upgrades have greatly reduced the impact of this building.

>> **Parking lot closure** A plan to close various surface parking lots across campus will emphasize pedestrian circulation and will remove vehicles from the center of campus.

For more information about ongoing facilities-related efforts, see www.pomona.edu/sustainability ("Initiatives" - "Green Building" and "Operations" - "Efforts").

2020 GOALS - How we're doing

⇒ Closer to goal - No change - ⇐ Farther from goal

Data Point	08-09	09-10	10-11	2020 Objective
Compliance with Sustainable Operations and Maintenance Standards	Yes	Yes	Yes	Yes
% of square-footage LEED-EBOM certified*	0%	0%	0%	15%

* LEED-EBOM certifies existing buildings for operations and maintenance procedures.

Food & Agriculture

By choosing more sustainable food items to use and sell on campus, Pomona not only reduces its environmental impact but provides an excellent opportunity to increase awareness of sustainability issues.

2010-11 Programs

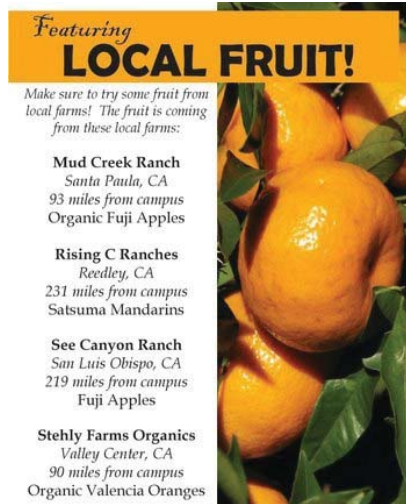
>> **Marine Stewardship Council (MSC) certification** In June, Pomona became the first liberal arts college to receive the MSC Chain-of-Custody Certification. Dining Services is committed to using as much sustainable seafood as possible, and as of September 2011 the majority of seafood used is MSC certified.

>> **Preserve recycled diningware** Dining Services has started using Preserve diningware in all dining halls. Preserve products are made from 100% recycled plastic and can be recycled after use.

>> **Fair trade/organic beverages** All coffee and teas served in the dining halls are certified Fair Trade and certified Organic.

>> **Cage-free eggs and humanely raise meat** Dining Services uses only cage-free eggs in all campus dining halls. The majority of beef and chicken used come from family-owned, responsibly-managed farms, which use vegetarian feed, do not use hormones or antibiotics, and allow animals to roam.

>> **Local Food** The dining halls offer only local and/or organic hand fruit (bananas, apples, oranges, etc.) in all dining halls. Pomona buys seasonally as much as possible.



Signage in the dining halls indicate local food options.

>> **Post-consumer composting** Diners can compost vegan food scraps and napkins in compost bins located near the tray return.

Ongoing Programs

>> **Trayless dining** Dining Services does not use trays in the dining area, which reduces food waste by an estimated 10%.

>> **Composting** All preproduction vegan food scraps and some post-production food scraps are composted at the campus Farm. Each week over 1.5 tons of food waste is composted.

>> **Reusable takeout containers** Upon arriving at Pomona, each student is issued a reusable green clamshell container that can be used to eat meals outside of the dining halls. These container cut down on the waste associated with using disposable containers.

>> **Food Rescue** Pomona's Food Rescue Group gathers leftover prepared food from Frary and Frank Dining Halls everyday to donate to local shelters and charitable organizations. This reduces Pomona's food waste while redirecting the food to those who need it.

For more information about ongoing food-related efforts, see www.pomona.edu/sustainability ("Initiatives" - "Food and Agriculture" - "Efforts").

2020 GOALS - How we're doing

⇒ Closer to goal - No change - ⇐ Farther from goal

Data Point	08-09	09-10	10-11	2020 Objective
% food purchases "sustainable"	Data not available	Data not available	36.6%	15% by 2015 30% by 2020
% food purchases "sustainable" in more than one category	Data not available	Data not available	6.4%	10%
% produce local	Data not available	Data not available	31.7%	60%
% sustainable seafood purchases	Data not available	Data not available	12.1%	100% by 2015
Programs in place in other campus dining facilities	No	No	ASPC survey about food preferences	Yes

Chemicals on campus are unavoidably used in art studios, science labs, facilities operations and maintenance, and construction projects. The use and disposal of these materials have important environmental health and sustainability implications, and the College is committed to reducing both as much as possible.

2010-11 Programs

>> **Low-VOC furnishings** Low-VOC paints, sealants, carpets, furniture, and other items were used for projects including the North Campus Residence Halls.

>> **Environmental safety position** The College hired a new part-time environmental safety professional on campus to assist with hazardous materials safety and disposal efforts.

Ongoing Programs

>> **Synthetic fertilizer reduction** Grounds continuously assesses new organic fertilizers for replacement of synthetic varieties. Grounds has also implemented practices to help reduce stress on the turf and ornamentals, thus reducing pesticide and fertilizer use.

>> **Green cleaning** Housekeeping uses a variety of certified green cleaners, as well as microfiber cloths instead of disposable towels and 100% post-consumer recycled paper towels and toilet paper.

>> **Activeion chemical-free cleaning** The College uses Activeion Ionator units for general cleaning. These units eliminate chemical use by using ionized water as a general purpose cleaner and sanitizer.

>> **Integrated Pest Management** Integrated Pest Management practices, which emphasize common sense and knowledge of the life cycles of pests to deal with them effectively and economically, are used across campus and greatly reduce the use of chemicals.

>> **Hazardous waste disposal** Batteries, light bulbs, and other hazardous wastes are disposed of with an approved handler. Outreach is conducted on campus to reduce inappropriate disposal.

>> **E-waste handling** The College's electronic waste is handled by an approved e-waste handler.

For more information about ongoing pollution-related efforts, see www.pomona.edu/sustainability ("Initiatives" - "Pollution" - "Efforts").



Furniture and other fixtures in the new residence halls are low-VOC.

2020 GOALS - How we're doing

⇒ Closer to goal - No change - ⇐ Farther from goal

Data Point	08-09	09-10	10-11	2020 Objective
Refrigerant use (pounds)	269	389	⇒ 284	202 pounds (25% reduction over 08-09)
Synthetic fertilizer use (pounds)	9,250	1,250	⇒ 750	0 pounds
Compliance with Green Cleaning Procedures	<i>Data not available</i>	49.9%*	⇒ 56.0%	100%
No non-essential use of hazardous materials**	N/A	N/A	N/A	Yes
Compliance with Sustainable Operations and Maintenance Standards	Yes	Yes	Yes	Yes

* For the first half of the 2009-10 academic year, the College erroneously purchased a variety of products out of compliance with green cleaning standards. ** Based on a study of the use of hazardous materials on campus (not yet completed).

Purchasing

For offices, classrooms, residence halls, and dining halls to continue functioning, the College must purchase large volumes of materials. Taking into account the materials used to create these items, potential impacts of material disposal, and opportunities for reuse, the College is able to reduce the environmental impact of purchases.

2010-11 Programs

>> **100% recycled paper** A variety of offices on campus now purchase 100% post-consumer recycled paper, in part due to credits available for offices participating in the Green Office Program.

>> **Greenware sustainable event kits** Greenware event kits provide reusable plates, bowls, cups, and silverware, along with 100% recycled napkins and composting materials. Kits are custom sized and checked out to students, staff, and faculty for campus events.

>> **Preserve recycled diningware** Dining Services is now starting to use Preserve diningware in all dining halls. Preserve products are made from 100% recycled plastic and can be reused for a lifetime.



Preserve 100% recycled diningware is now in dining halls and the new Greenware event program.

>> **Green cleaning** Housekeeping uses a variety of certified green cleaners, as well as microfiber cloths instead of disposable towels and 100% post-consumer recycled paper towels and toilet paper.

>> **Activeion chemical-free cleaning** Chemical-free Activeion cleaning units are used in Housekeeping and are available at the RA desks for student use.

>> **EnergyStar-certified appliances** The College is committed to purchasing EnergyStar-certified energy-efficient appliances whenever available.

>> **Green furniture** The College's interior designer has produced a guide to sustainable furniture purchasing options for residence halls, from which the College makes decisions about new furniture.

>> **Pesticide and fertilizer reduction** The Grounds Department has implemented a number of practices to help reduce stress on the turf and ornamentals, thus reducing pesticide and fertilizer use. Integrated Pest Management practices are used across campus.

For more information about ongoing purchasing-related efforts, see www.pomona.edu/sustainability ("Initiatives" - "Purchasing" - "Efforts").

Ongoing Programs

>> **Eco-friendly diningware** All disposable to-go containers and silverware in the dining halls are biodegradable, and all napkins are 100% recycled. Catering orders can specify biodegradable diningware when selecting disposable options and non-disposable options are also available.

2020 GOALS - How we're doing

⇒ Closer to goal - No change - ⇐ Farther from goal

Data Point	08-09	09-10	10-11	2020 Objective
% white copy paper 100% PCW, FSC-certified, PCF	<i>Data not available</i>	0.55%	⇒ 9.6%	90%
% non-standard (e.g. other sizes, colors) copy paper at least 30% PCW	<i>Data not available</i>	63.1%	⇐ 8.3%	90%
College letterhead 100% PCW, FSC-certified, PCF	0%	0%	0%	100%
% offices in Green Office Program	N/A	7.9%	⇒ 12%	30%
Compliance with Sustainable Operations and Maintenance Standards	N/A	Yes	Yes	Yes

Transportation

Pomona's transportation impact includes mobility of all kinds - from annual student travel back and forth between home and campus to how students get to local internships, to international research travel, daily employee commuting, and the use of bikes on campus.

2010-11 Programs

>> **Transit guide** This guide provides information about how to get around LA and the surrounding areas with public transportation.

>> **South Campus Parking Structure** The new parking structure includes six multiple-vehicle electric charging stations, allowing up to twelve electric vehicles to charge at one time, and helps to move vehicles out of the center of campus.



Biking is a common mode of transportation for Pomona students.

>> **Green Bikes** This student-run program provides free bike repair services, a fleet of bikes for students to use, and bike-related workshops and events.

>> **Green Bikes** A small fleet of folding bikes can be checked out free-of-charge on a daily basis and easily fit on public transportation.

>> **No first-year vehicles** The College is committed to disallowing incoming first-year students from bringing cars to campus. Instead, incoming first-years are encouraged to use Zip Car or public transportation.

Ongoing Programs

>> **Faculty rental and home loan program** The College owns approximately 20 faculty rental units within one mile of campus and provides reduced rate mortgages for properties within five miles of campus.

>> **Rideshare program** The College provides \$2/day to employees who don't drive alone to work and pays up to \$100 of monthly transit costs.

>> **Rentable transportation for students** The College provides a rentable passenger van and 25-passenger bus for student groups needing transportation.

>> **Zipcar** The College hosts a fleet of Zipcars on campus for easy daily and hourly car-sharing.

For more information about ongoing transportation-related efforts, see www.pomona.edu/sustainability ("Initiatives" - "Transportation" - "Efforts").

Commuting BY THE NUMBERS

- >> 60% of commuting miles were driven alone in a car. 19% were carpooled, 17% were on transit, 3% were on motorcycle, and just over 1% were walked or biked.
- >> 47% of employees live within five miles of campus. 7% live more than 40 miles away.

2020 GOALS - How we're doing

⇒ Closer to goal - No change - ⇐ Farther from goal

Data Point	08-09	09-10	10-11	2020 Objective
Campus fleet gas use (gallons)	5,059	10,819	⇒ 5,392	4,300 gallons (15% reduction over 08-09)
Single-occupancy vehicle commuting miles	2,403,269	3,298,269	⇒ 2,912,583	2,163,588 miles (10% reduction)
Total commuting miles	3,610,133	4,827,418	⇒ 4,030,235	3,429,848 miles (5% reduction)
% fleet vehicles alternatively fueled	1%	1%	⇒ 2%	50%
Compliance with vehicle purchasing standards	Yes	Yes	Yes	Yes

Waste

Waste is a particularly important issue for Southern California, as landfills reach capacity and waste disposal begins to require farther and more energy-intensive modes of transportation. Diversion to non-landfill methods of disposal, an increasing emphasis on reuse, and reduction of total waste are all important parts of the College's waste strategy.

2010-11 Programs

>> **New residential compost locations** Pomona's residential composting program pilot was a success and the President's Sustainability Fund has allowed for the installation of a total of nine bins near residential halls across campus.

>> **ReCoop fall sale** Thanks to the staff and students who worked on the sale, Pomona hosted the most successful ReCoop fall sale in its history. Over 300 people were waiting to enter the sale before its 8 a.m. opening, and revenues were higher than ever before. These funds go back into the program to support staffing and operations.

>> **Recycling Center site visits** The SIO hosted several trips to the Grand Central Recycling Center in the City of Industry so students could see where their campus recyclables went through the recycling process.

>> **Greenware sustainable event kits** Greenware event kits provide reusable plates, bowls, cups, and silverware, along with 100% recycled napkins and composting materials. Kits are custom sized and checked out to students, staff, and faculty for campus events.

>> **Post-consumer composting** Diners can now compost vegan food scraps and napkins in compost bins located near the tray return at all three dining halls.

>> **ReCoopOFFICE program** Departments and offices on campus can now easily exchange unwanted office supplies and furniture through an extension of the ReCoop Program.



Compost bins located around campus provide opportunities for landfill waste diversion and sustainable waste management.

Ongoing Programs

>> **Recycling cards and bin stickers** The SIO continues to distribute cards and stickers detailing the College's recycling program.

>> **Reusable to-go** Students receive a reusable to-go container for use in the dining halls, and must purchase disposable containers if needed.

>> **Trayless dining** Pomona's dining halls are now tray-free, reducing food waste and dishwashing.

>> **Institution Recycling Network** Unneeded furniture and academic supplies are donated to international communities in need.

>> **Green waste mulching** Green waste is composted on and off campus for reuse.

>> **Pre-consumer composting** Kitchen scraps from all campus eateries are composted at the Organic Farm.

>> **Compost bucket checkout** Students can check out free buckets for collecting compostable wastes from the Sustainability Integration Office.

>> **Food Rescue** Leftover prepared food is donated to local shelters and charitable organizations.

>> **Student print quota** Students receive \$10 of print quota each semester. The College charges per page (not per side) encouraging double-sided printing.

>> **Cooking oil reuse** Used cooking oil is collected by a company that uses it to make biodiesel.

For more information about ongoing waste-related efforts, see www.pomona.edu/sustainability ("Initiatives" - "Waste" - "Efforts").

Yearly Waste Diversion Data*

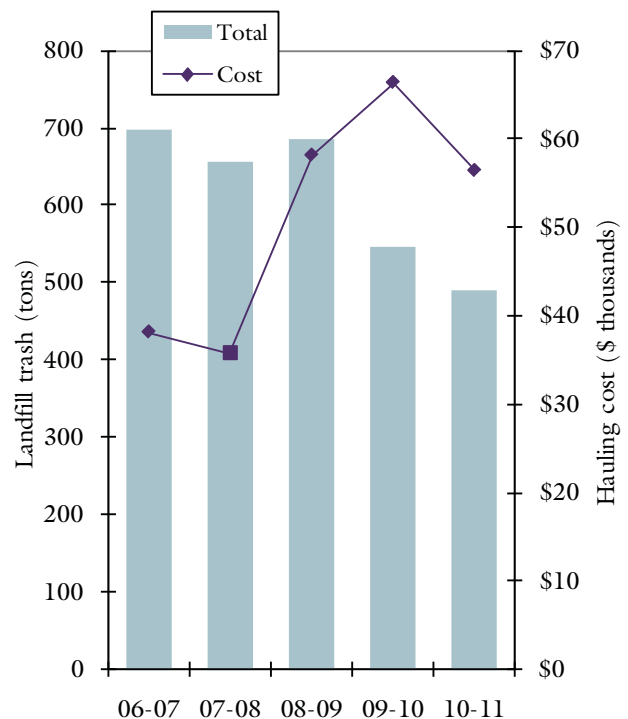
Year	Landfill		Recycling	Compost	Hazard.	Green Waste	Electronic	Total	Diversion
	Tons	Cost							
06-07	699	\$38,166	480**	20**	5.5	84.5**		1,289	45.8%
07-08	655	\$35,756	480**	26**	5	84.5**		1,251	47.6%
08-09	686	\$58,125	480**	28**	5	84.5		1,284	46.5%
09-10	544	\$66,330	504**	29**	2	112	1	1,192	54.4%
10-11	490	\$56,394	529**	90**	3	112**	1.5	1,224	60.0%

* Not including construction/demolition wastes, donations, or ReCoop. ** Estimated; exact measurements not available.

Waste BY THE NUMBERS

- >> In 2010-11 the College disposed of 2,774.6 tons of construction waste, of which 96% was diverted from landfills.
- >> In 2010-11 ReCoop sold \$14,146 worth of used furniture, appliances, books, and many other items - a 22% increase over 2009-10!
- >> Almost 75% of landfill waste disposed is created during the academic year.
- >> A Spring 2010 dining hall waste audit revealed that diners leave an average of 0.23 lbs. of waste on their plates at the end of each meal - resulting in almost 70 tons of cooked, uneaten food on an annual basis.
- >> Through the Institutional Recycling Network, Pomona donated 12 tons of furniture to Food for the Poor in Haiti, including bed frames, bookcases, dressers, mattresses, and more.

Landfill Trash Volume and Cost



2020 GOALS - How we're doing

⇒ Closer to goal - No change - ⇐ Farther from goal

Data Point	08-09	09-10	10-11	2020 Objective
Diversion rate*	47%	54%	⇒ 60%	75%
Construction waste diversion	<i>Data not available</i>	77%	⇒ 95.5%	90%
Total waste (tons)*	1,284	1,192	⇐ 1,224	1,155 tons (10% reduction over 08-09)

* Includes: landfill, recycling, compost, hazardous, electronic, and green waste; does not include construction/demolition wastes, donations, or ReCoop.

Water

Pomona takes very seriously its “college in a garden” setting, but is also committed to reducing water use and to utilizing sustainable water management techniques. This means analyzing where and how water is used, as well as where this water comes from and what happens to it after it’s used.

2010-11 Programs

>> **Ralph Cornell Society of Native and Edible Landscapers** This new student club planted four areas on campus with native plant specimens. The group aims to emphasize drought-resistant and native Southern California plants around campus.

>> **New stormwater management projects** New construction projects included diversion of runoff into the Wash and the use of bioswales to collect and reincorporate rainwater into the natural aquifer.

>> **Domestic water reduction** In 2010-11 the College installed a large number of efficient toilets, shower heads, and faucets across campus.

>> **Landscaping changes** In 2010-11, Grounds reduced turf on campus by 43,402 square feet.

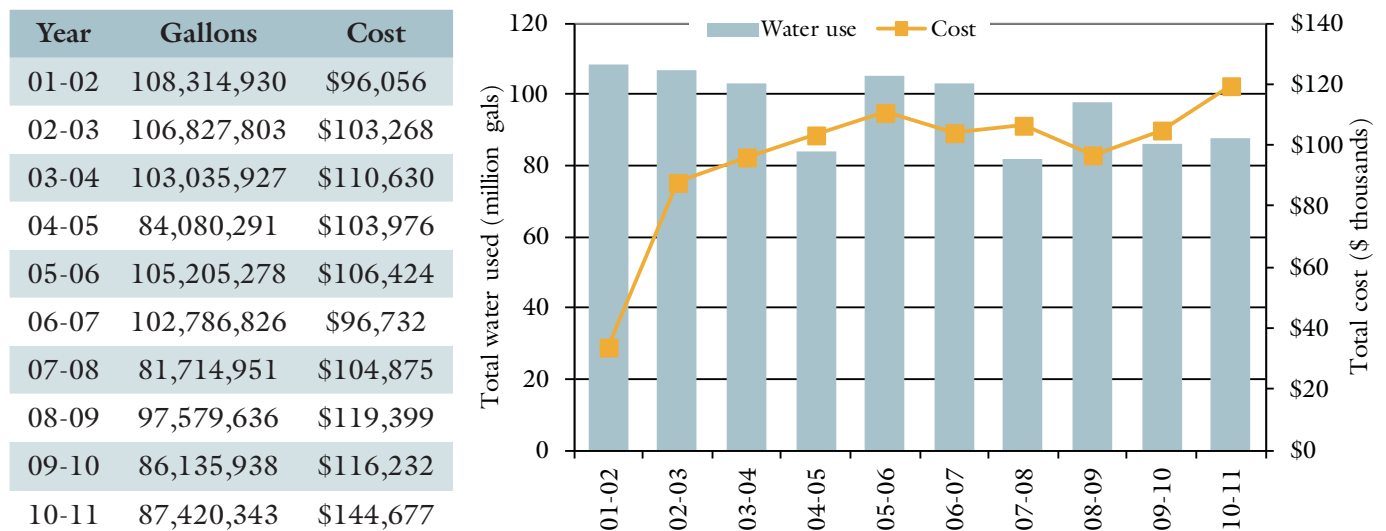
Ongoing Programs

>> **Stormwater management** Bioswales, collection basins, and other methods manage stormwater.

>> **Efficient landscaping** Drip and other efficient irrigation systems, drought-resistant and native plantings, and edible plants are utilized across campus to reduce water use.

For more information about ongoing water-related efforts, see www.pomona.edu/sustainability (“Initiatives” - “Water” - “Efforts”).

Annual Water Use and Cost



2020 GOALS - How we’re doing

⇒ Closer to goal - No change - ⇐ Farther from goal

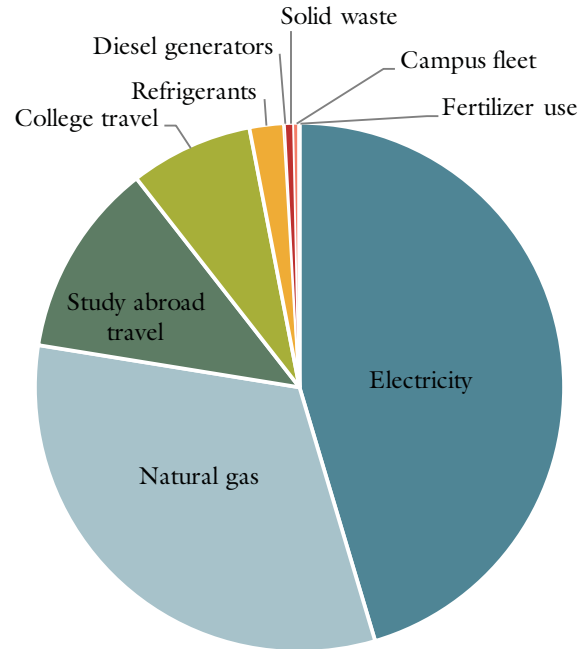
Data Point	08-09	09-10	10-11	2020 Objective
Change in 3-year average water use		11.5% increase	⇐ 32.6% increase	5% annual reduction
Total water use (gallons)	97,579,636	86,135,938	⇐ 87,420,343	No goal set
Use of reclaimed/gray water	No	No	No	Yes
Impermeable surfaces (square-feet)	2,996,263	2,996,263	⇒ 2,912,752	No net increase
Use of sustainable stormwater techniques		Increase	⇒ Increase	General increase
% of major buildings metered for water	0%	0%	⇒ 5%	100% (by May 2011)
% of all buildings metered for water	0%	0%	⇒ 2%	100% (by May 2014)

Climate Change

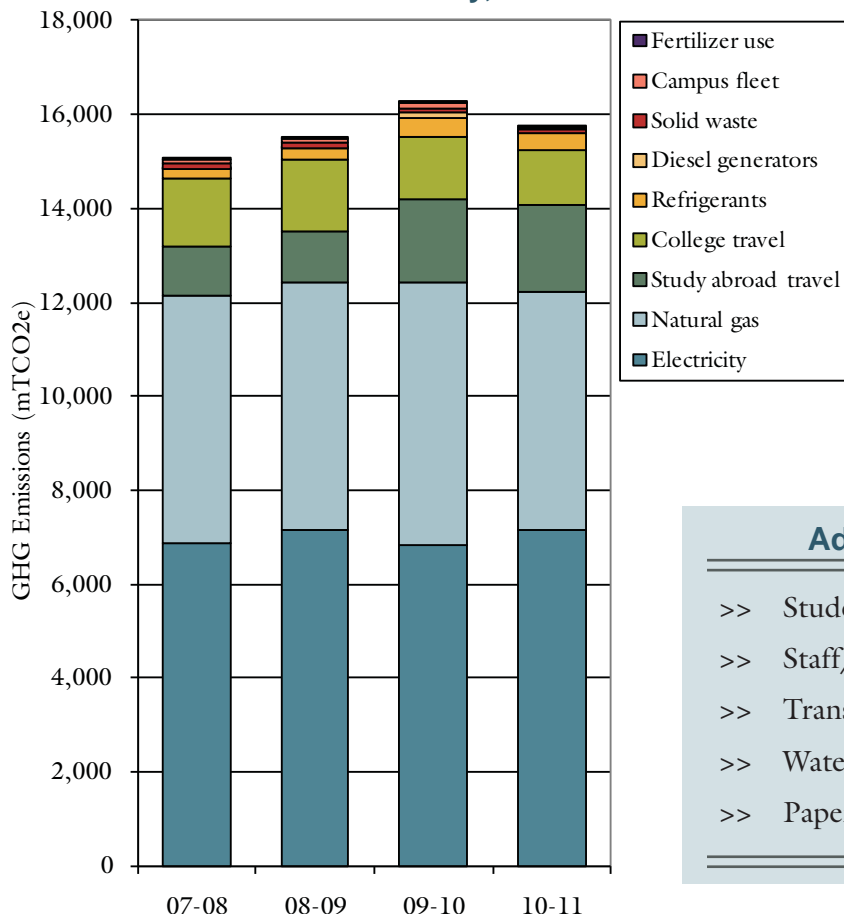
2009-10 Climate Action Plan Greenhouse Gas Inventory

The following inventory includes sources of emissions that are considered in the College's emissions reduction plan. Additional emissions are described below. All emissions are in metric tonnes of carbon dioxide equivalent (mTCO_{2e}), used to compile a variety of greenhouse gases.

Source	Emissions (mTCO _{2e})	% of total emissions
Electricity	7,141.0	45.0%
Natural gas	5,063.9	32.0%
Study abroad travel	1,873.1	12.0%
College travel (air & road)	1,181.5	8.0%
Refrigerants	329.4	2.0%
Solid waste	78.7	1.0%
Campus fleet	48.7	<0.1%
Diesel generators	17.8	<0.1%
Fertilizer use	3.3	<0.1%
TOTAL	15,737.4	
Composting offset	-34.6	
NET TOTAL	15,702.8	



Greenhouse Gas Inventory, 07-08 to 10-11



Breakdown by Scope

- >> **Scope 1 emissions** - 5,463.1 mT
From sources controlled by the College.
Natural gas; refrigerants; diesel generators; campus fleet; fertilizer use
- >> **Scope 2 emissions** - 7,141.0 mT
From off-site sources resulting from College activities.
Purchased electricity
- >> **Scope 3 emissions** - 3,133.3 mT
From all other indirect sources.
Study abroad travel; college travel; solid waste

Additional Emissions Sources

- >> Student travel to/from campus: 7,265.9 mT
- >> Staff/faculty commuting: 1,510.4 mT
- >> Transmission losses: 706.3 mT
- >> Water use: 227.3 mT
- >> Paper use: 20.5 mT

Climate Change

Greenhouse Gas Inventory, Changes from Previous Year

CLIMATE ACTION PLAN EMISSIONS SOURCES	08-09	09-10	10-11	Change 09-10 to 10-11
Electricity	7,161.0	7,510.1	7,141.0	-5.3%
Natural gas	5,259.2	5,567.8	5,063.9	-9.1%
Study abroad travel	1,106.9	1,768.6	1,873.1	+5.9%
College travel (air & road)	1,520.8	1,331.3	1,181.5	-11.3%
Refrigerants	237.8	433.4	329.4	-24.0%
Solid waste	110.2	87.4	78.7	-10.0%
Campus fleet	70.6	97.5	48.7	-50.1%
Diesel generators	13.4	100.0	17.8	-82.2%
Fertilizer use	10.4	5.8	3.3	-43.1%
TOTAL	15,490.3	16,931.9	15,737.4	
OTHER SOURCES	08-09	09-10	10-11	Change 09-10 to 10-11
Student travel to/from campus	7,035.6	6,857.6	7,265.9	+6.0%
Staff/faculty commuting	1,000.3	1,405.7	1,510.4	+7.4%
Transmission losses	708.2	676.9	706.3	+4.3%
Water use	254.0	224.0	227.3	+1.5%
Paper use	160.3	121.8	20.5	-83.2%
OFFSETS	08-09	09-10	10-11	Change 09-10 to 10-11
Composting	-10.8	-11.2	34.6	+208.9%
COMPLETE TOTAL	24,637.9	26,206.7	25,433.2	-3.0%

2020 GOALS - How we're doing

⇒ Closer to goal - No change - ⇐ Farther from goal

Data Point	08-09	09-10	10-11	2020 Objective
Greenhouse gas emissions (mTCO ₂ e, climate action plan sources plus offsets)	15,479.5	16,224.5	⇒ 15,702.8	11,453.0 mTCO ₂ e (26% reduction over 08-09)