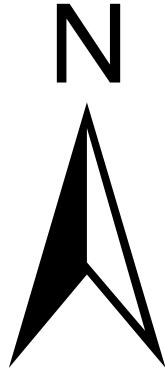


# Fallen Fruit

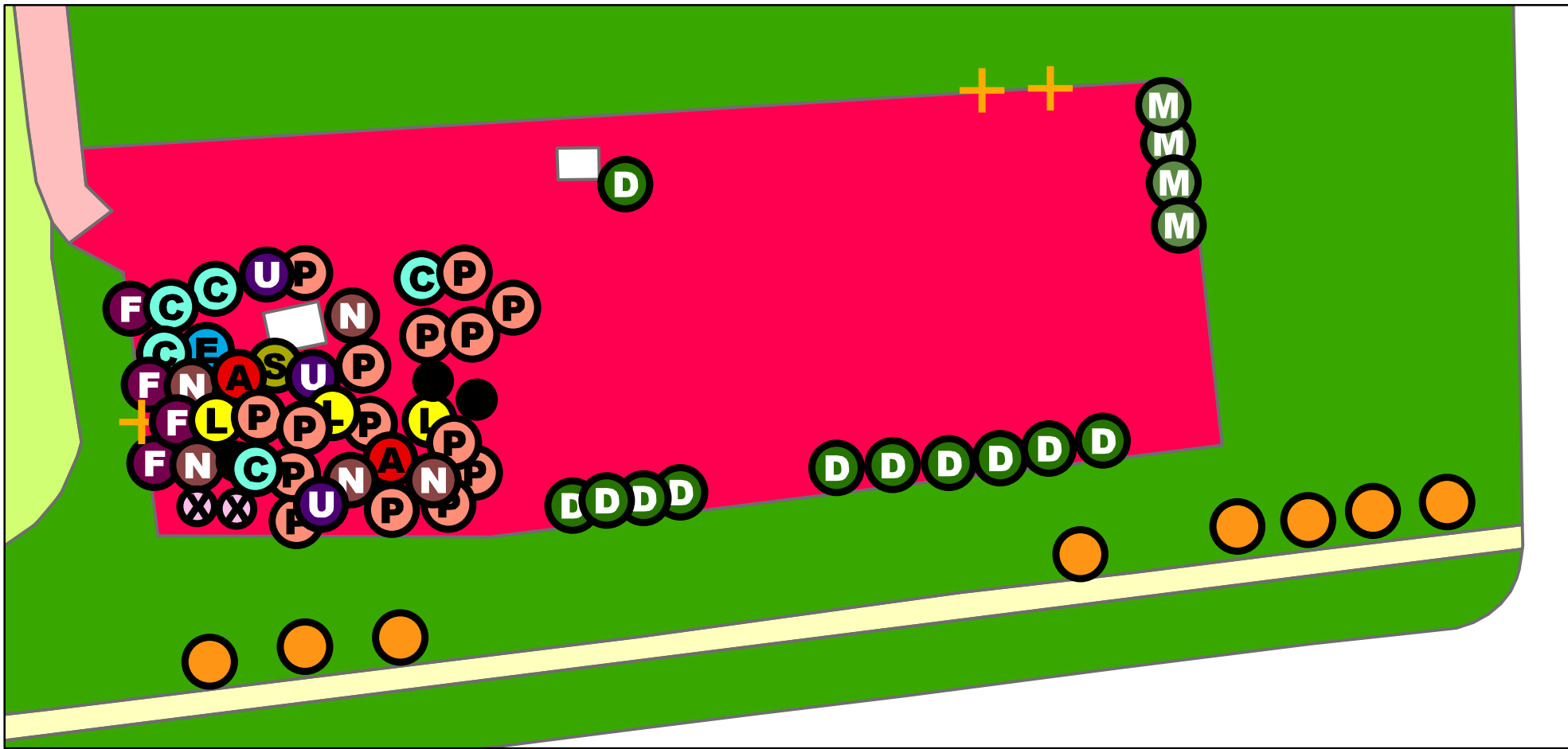
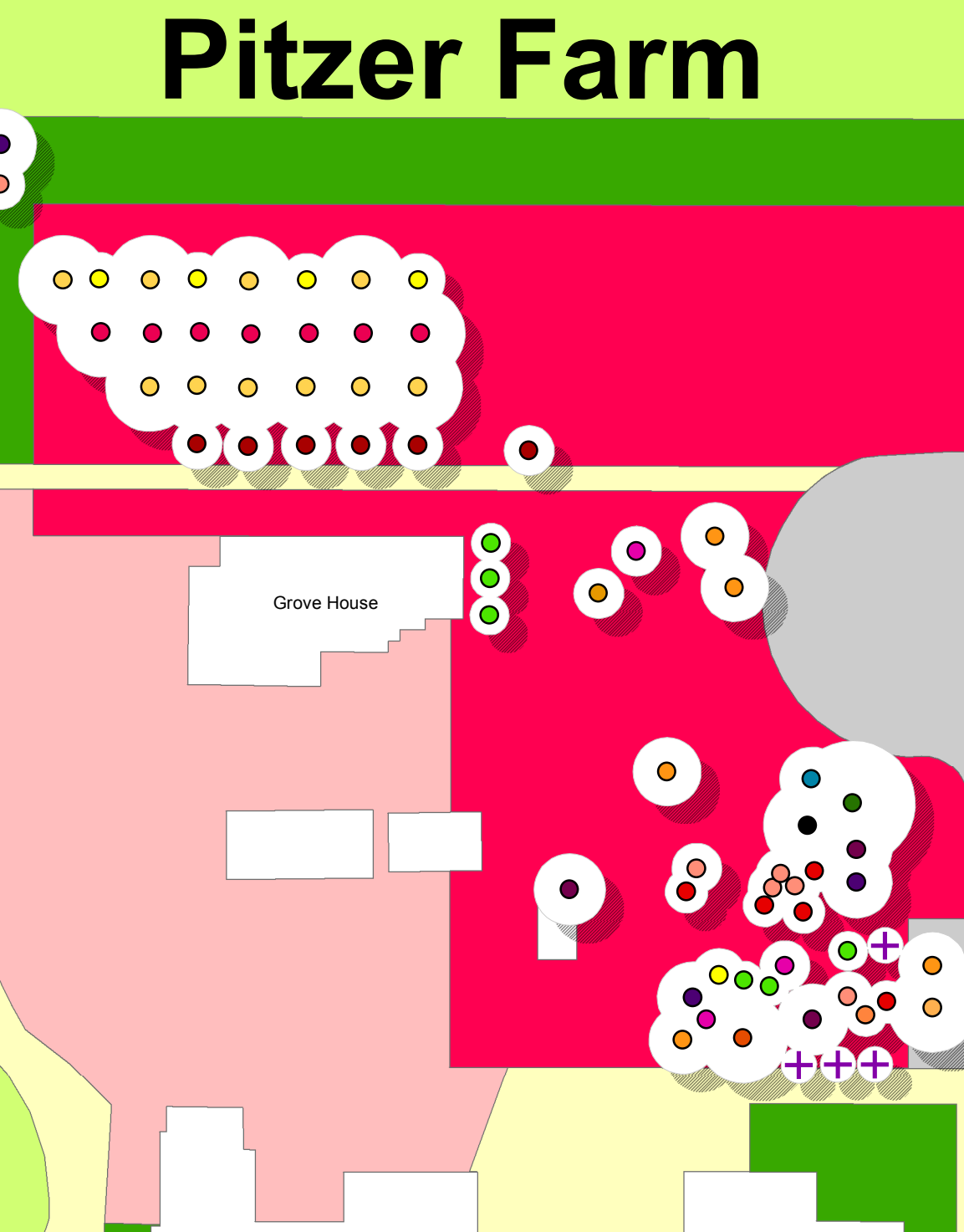
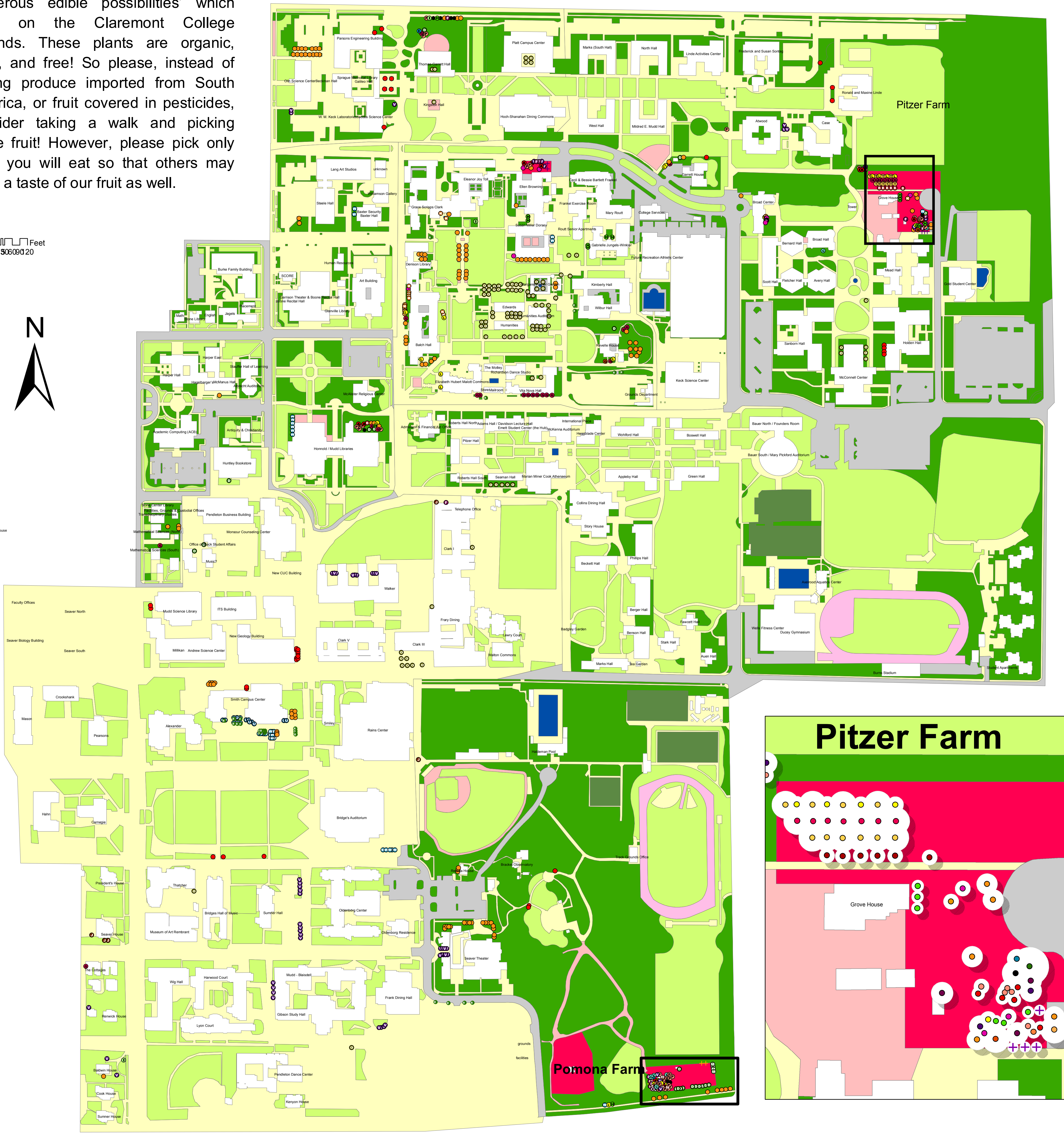
Shelby G. Mudd Building | Email: Colleen\_Cohen@claremont.edu

This map was made to educate the Claremont Community about the numerous edible possibilities' which grow on the Claremont College grounds. These plants are organic, local, and free! So please, instead of buying produce imported from South America, or fruit covered in pesticides, consider taking a walk and picking some fruit! However, please pick only what you will eat so that others may have a taste of our fruit as well.

Feet  
0 50 100 200



Pitzer College President's House  
OCU President's House



## Edible Plants

- |                 |               |                   |                     |
|-----------------|---------------|-------------------|---------------------|
| ● Other         | ● Grapefruits | ● Olives          | ● Pomegranates      |
| ● Apples        | ● Guava       | ● Oranges         | ● Pomelos           |
| ● Apricot       | ● Kumquats    | ● Passion Fruits  | ● Rosemary          |
| ● Avocados      | ● Lemons      | ● Peaches         | ● Sapotes           |
| ● Blood Oranges | ● Limes       | ● Pears           | ● Strawberry Guavas |
| ● Cherries      | ● Loquats     | ● Persimmons      | ● Strawberry Tree   |
| ● Figs          | ● Nectarines  | ● Pineapple Guava | ● Tangelos          |
| ● Grapes        | ● Nut Trees   | ● Plums           |                     |

# The Edible Landscape of the Claremont Colleges